



28 Mardale Crescent, Lymm, WA13 9PD

£379,950



28 Mardale Crescent, Lymm, WA13 9PD

£379,950

BEAUTIFULLY PRESENTED AND READY TO MOVE INTO THIS SEMI-DETACHED HOUSE OCCUPIES A CORNER PLOT SITUATED CLOSE TO LYMM VILLAGE CENTRE. Hall with clever inbuilt storage and staircase lighting, lounge to the front with feature living flame gas fire. Modern kitchen with integrated appliances with door to outside and open to the dining room at the area. A light and airy landing gives access to two double bedrooms, a single bedroom with built in wardrobe and a gorgeous modern bathroom. Externally there are gardens to three sides, patio areas, lawn and borders. Access to the garage which is situated at the rear of the property with light and power and driveway.

## Description

BEAUTIFULLY PRESENTED AND READY TO MOVE INTO THIS SEMI-DETACHED HOUSE OCCUPIES A CORNER PLOT SITUATED CLOSE TO LYMM VILLAGE CENTRE. Hall with clever inbuilt storage and staircase lighting, lounge to the front with feature living flame gas fire. Modern kitchen with integrated appliances with door to outside and open to the dining room at the area. A light and airy landing gives access to two double bedrooms, a single bedroom with built in wardrobe and a gorgeous modern bathroom. Externally there are gardens to three sides, patio areas, lawn and borders. Access to the garage which is situated at the rear of the property with light and power and driveway.

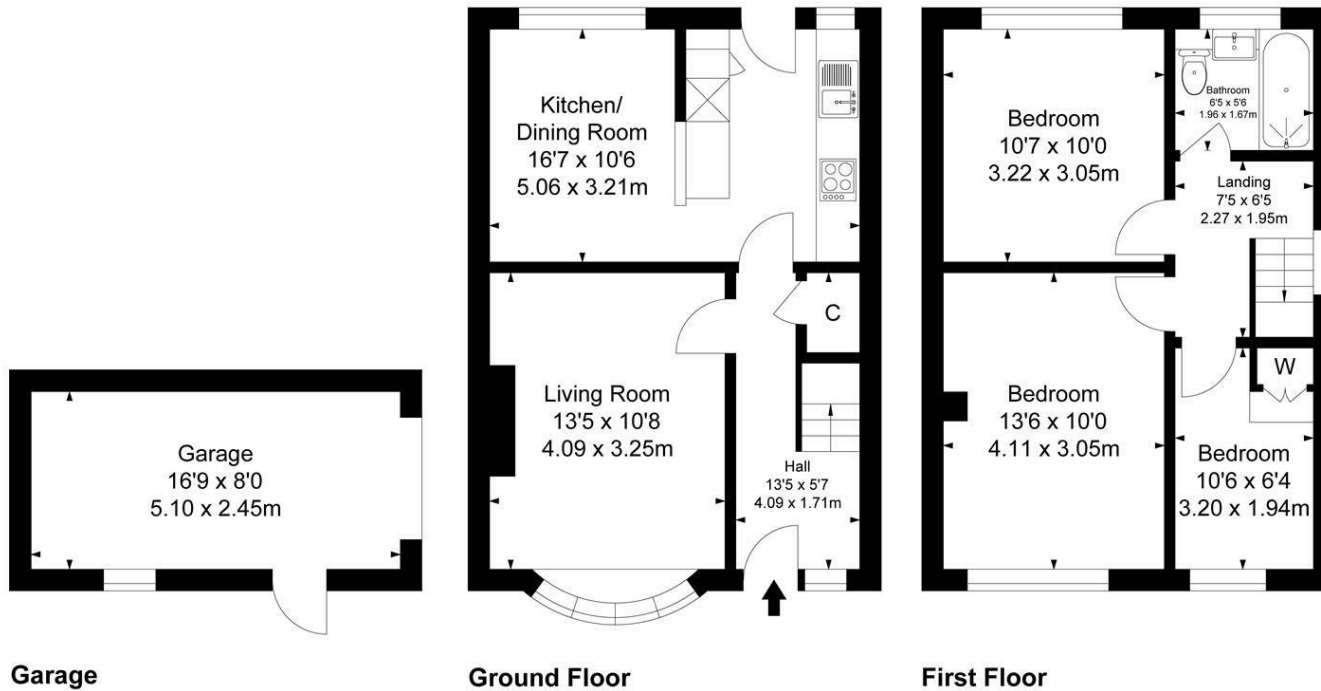


Council Tax Band: C

## Floor Plans

### Mardale Crescent

Approximate Gross Internal Area :-  
 Ground Floor :- 38.81 sq m / 418 sq ft  
 First Floor :- 38.06 sq m / 410 sq ft  
 Garage :- 12.49 sq m / 134 sq ft  
 Total :- 89.36 sq m / 962 sq ft



#### Garage

#### Ground Floor

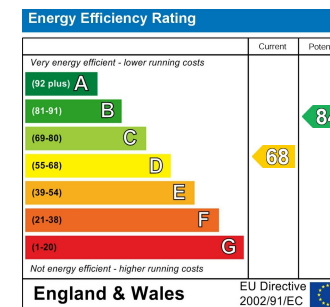
#### First Floor

Surveyed and drawn by Lens Media for illustrative purposes only. Not to scale. Whilst every attempt was made to ensure the accuracy of the floor plan, all measurements are approximate and no responsibility is taken for any error.

## Area Map



## Energy Performance Graph



These particulars, whilst believed to be accurate are set out as a general outline only for guidance and do not constitute any part of an offer or contract. Intending purchasers should not rely on them as statements of representation of fact, but must satisfy themselves by inspection or otherwise as to their accuracy. No person in this firm's employment has the authority to make or give any representation or warranty in respect of the property.